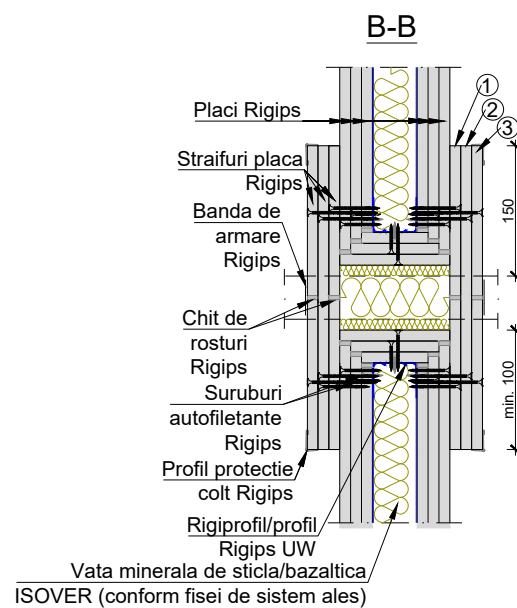
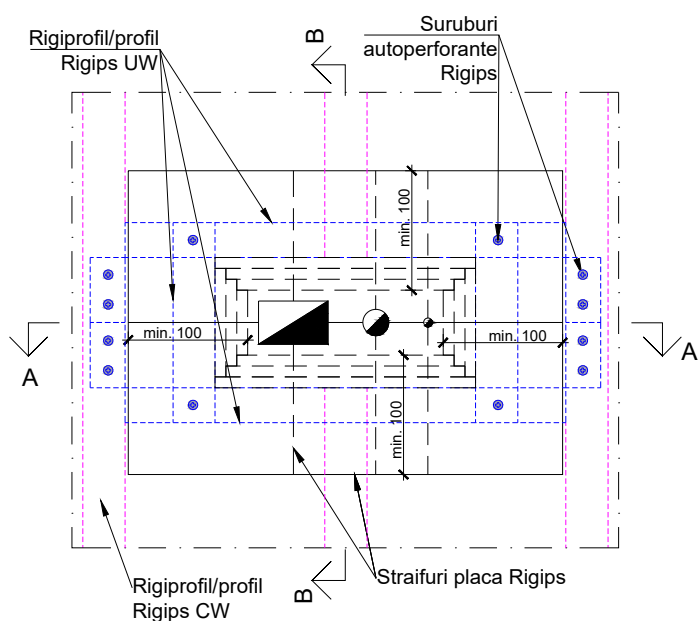
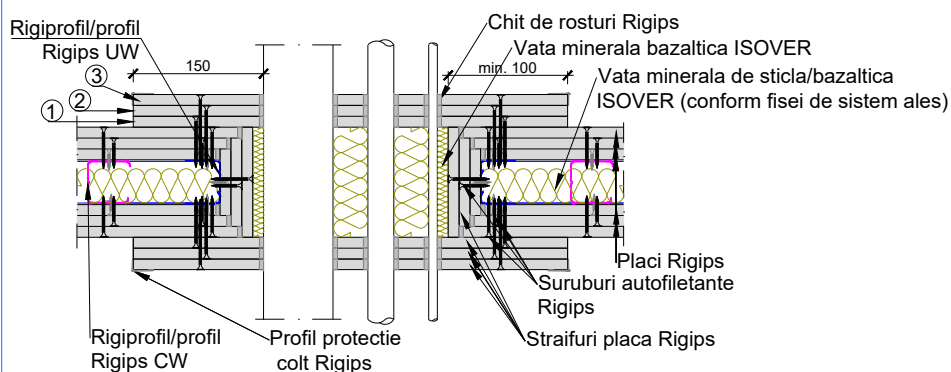


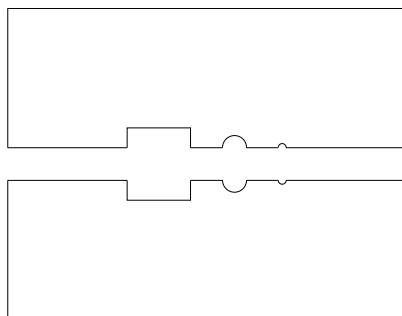
## Perete-vedere



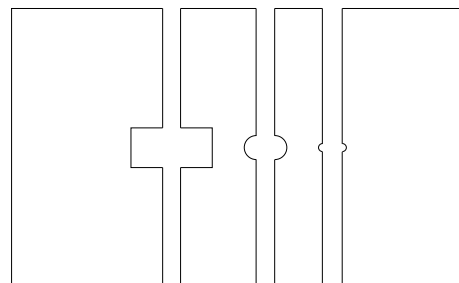
## A-A



## Placile din stratul ① si ③



## Placile din stratul ②



### NOTE:

1. Detaliul se va aplica in executie numai cu viza proiectantului, in acord cu normele de proiectare;
2. Detaliu se va pune in acord cu solutia din Catalogul si din Agrementul Tehnic Rigips.
3. Pentru modificari sau alte date va puteti adresa Departamentului Tehnic Rigips